



Summer 2008 Programs

Upper Las Virgenes Canyon Open Space Preserve

North of US-101 and West of
Valley Circle

Program and Hiking Hints:

Programs are for all ages
No reservations required
Remember to pay \$1 parking fee
Stay on the trail.
Rain cancels programs
No dogs allowed on programs
Wear appropriate shoes
Bring water and sun protection
In the evening, bring a flashlight
and jacket
Check for ticks after walks
Poison Oak - "Leaves of three, let
it be"

Directions:

Victory Trailhead

US 101 exit Valley Cir Blvd/
Mulholland Dr. Go north on
Valley Cir Blvd. Turn left and
proceed to the road's termina-
tion. Parking lot is beyond the
gate.

Las Virgenes Trailhead

US 101 exit Las Virgenes Cyn
Rd/Malibu Creek Rd. Go north
on Las Virgenes Cyn 2 miles
until road ends. Park along
street.

Ahmanson Ranch

(Reservations Only) US 101
exit Las Virgenes Cyn Rd/Mal-
ibu Creek Rd. Go north on Las
Virgenes Cyn Turn left onto
Grummer Cyn Rd.

Fri. July 11, 8 pm

Take a deeper look into astronomy. We will explore the wonders that the sky and park hold for us. Meet at the Victory Entrance. 1½-2 hours, moderate ½-mile

Trail to the Stars

Fri. August 1, 8 pm

Take a deeper look into astronomy. We will explore the wonders that the sky and park hold for us. Meet at the Victory Entrance. 1½-2 hours, moderate ½-mile

Trail to the Stars

Sat. August 16, 7:30 pm

Everything is different under moonlight including nature. Bring your portfolio of senses to explore this special time of the moon's cycle. Meet at the Victory entrance. 2 hours, easy walk.

Full Moon Hike

Mon. September 15, 7:30 pm

Everything is different under moonlight including nature. Bring your portfolio of senses to explore this special time of the moon's cycle. Meet at the Victory entrance. 2 hours, easy walk.

Full Moon Hike

Fri. September 26, 7:30 pm

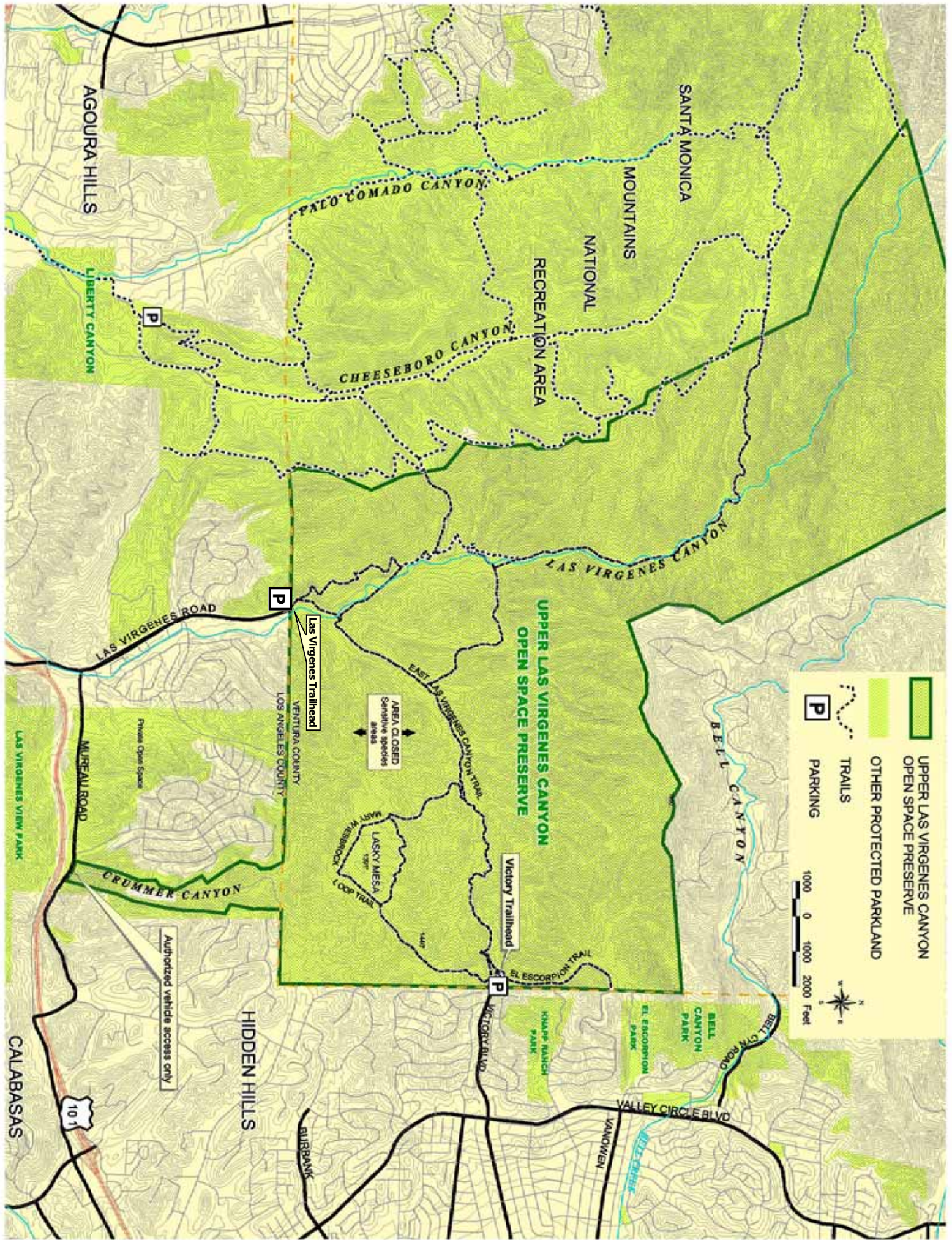
Take a deeper look into astronomy. We will explore the wonders that the sky and park hold for us. Meet at the Victory Entrance. 1½-2 hours, moderate ½-mile

Trail to the Stars

For More Information

(310) 858-7272 x115

www.LAMountains.com



UPPER LAS VIRGENES CANYON
OPEN SPACE PRESERVE

OTHER PROTECTED PARKLAND

TRAILS

PARKING

1000 0 1000 2000 Feet



Authorized vehicle access only

AREA CLOSED
Sensitive species
areas

AGOURA HILLS

SANTA MONICA

MOUNTAINS

NATIONAL

RECREATION AREA

PALO COMADO CANYON

CHEESEBORO CANYON

LAS VIRGENES CANYON

UPPER LAS VIRGENES CANYON
OPEN SPACE PRESERVE

BELL CANYON

LAS VIRGENES ROAD

MURREAU ROAD

CRUMMER CANYON

EAST LAS VIRGENES CANYON TRAIL

Victory Trailhead

EL ESCORPION TRAIL

LASKY MESA
1587'

MARY WISERBROCK
LOOP TRAIL

VALLEY CIRCLE BLVD

VANOWEN

BLAIRBANK

HIDDEN HILLS

CALABASAS

101

LAS VIRGENES VIEW PARK

Private Open Space

LOS ANGELES COUNTY
VENTURA COUNTY

P

P

P

P